



**Specifications**

- 1. **Structure:** RCC earthquake resistant structure.
- 2. **Windows:** Powdercoated aluminium windows.
- 3. **Doors:** Teak wood finish main door, Flush doors for rooms, FRP doors for toilets.
- 4. **Plumbing:** Standard plumbing fittings.
- 5. **Electrical:** Concealed electrical wiring, Standard modular switches.
- 6. **Flooring:** Vitrified tiles for flooring, antiskid tiles in toilet.

**Amenities**

- 1. Gated compound
- 2. CCTV surveillance system.
- 3. Automatic lift.
- 4. Covered/open parking

**Location plan**  
(Not to scale)



Project marketed by  
**SPACELINK**  
 Mob: +917030195007  
 Email: spacelinkindia@yahoo.com

DC Infraspace  
 Mob: +918408027774  
 Reg office: Felicity Apartments  
 Flat 101 Ribandhar 403006

Shop no LGS4 Rishwa Residency  
 Opp Tata service centre,  
 Durgabhatt Ponda -Goa.

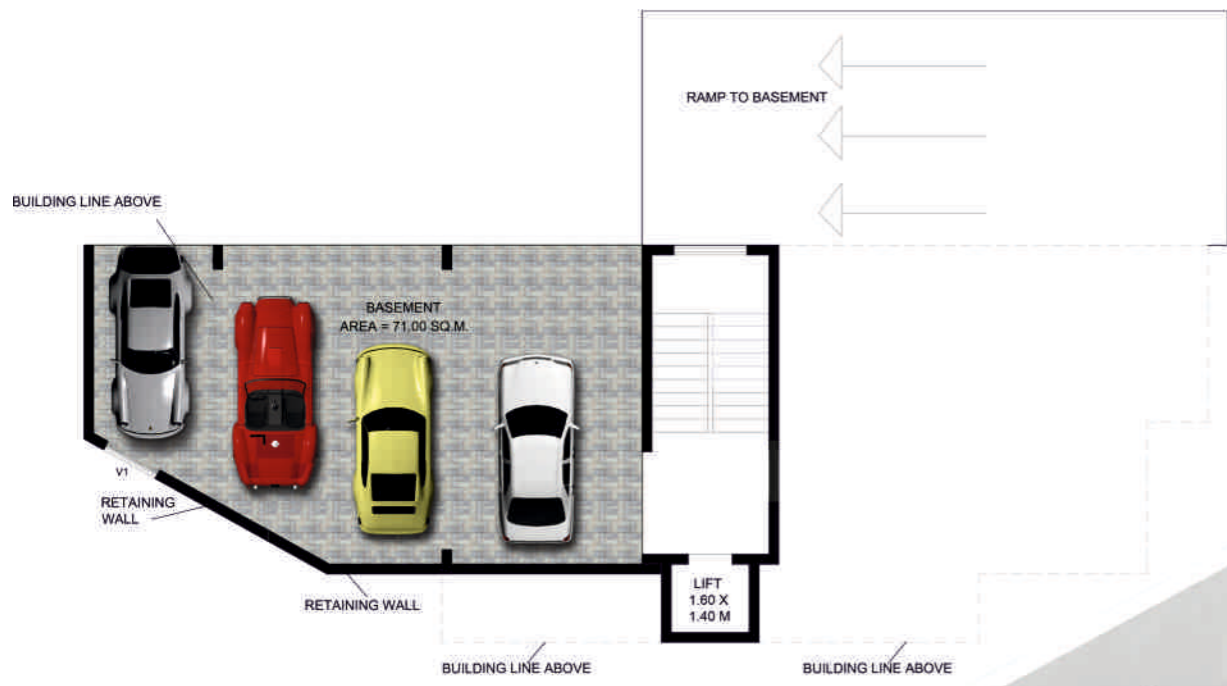
Architect  
 Mandar R. Upasani

Engineer  
 Manoj Amshekar

Email: dcinfraspace@yahoo.com, Sales@dcinfraspace.com, www.dcinfraspace.com

*Affordable, spacious homes in the heart of Ponda -Goa.....*

All illustrations and artist impressions in this brochure are only for indicative purpose, should not be taken as actual and as legal document. There may be changes without prior notice and the discretion to do same remains solely with developers.



BASEMENT FLOOR PLAN



TYPICAL FIRST SECOND & THIRD FLOOR PLAN



GROUND FLOOR PLAN



FOURTH FLOOR PLAN